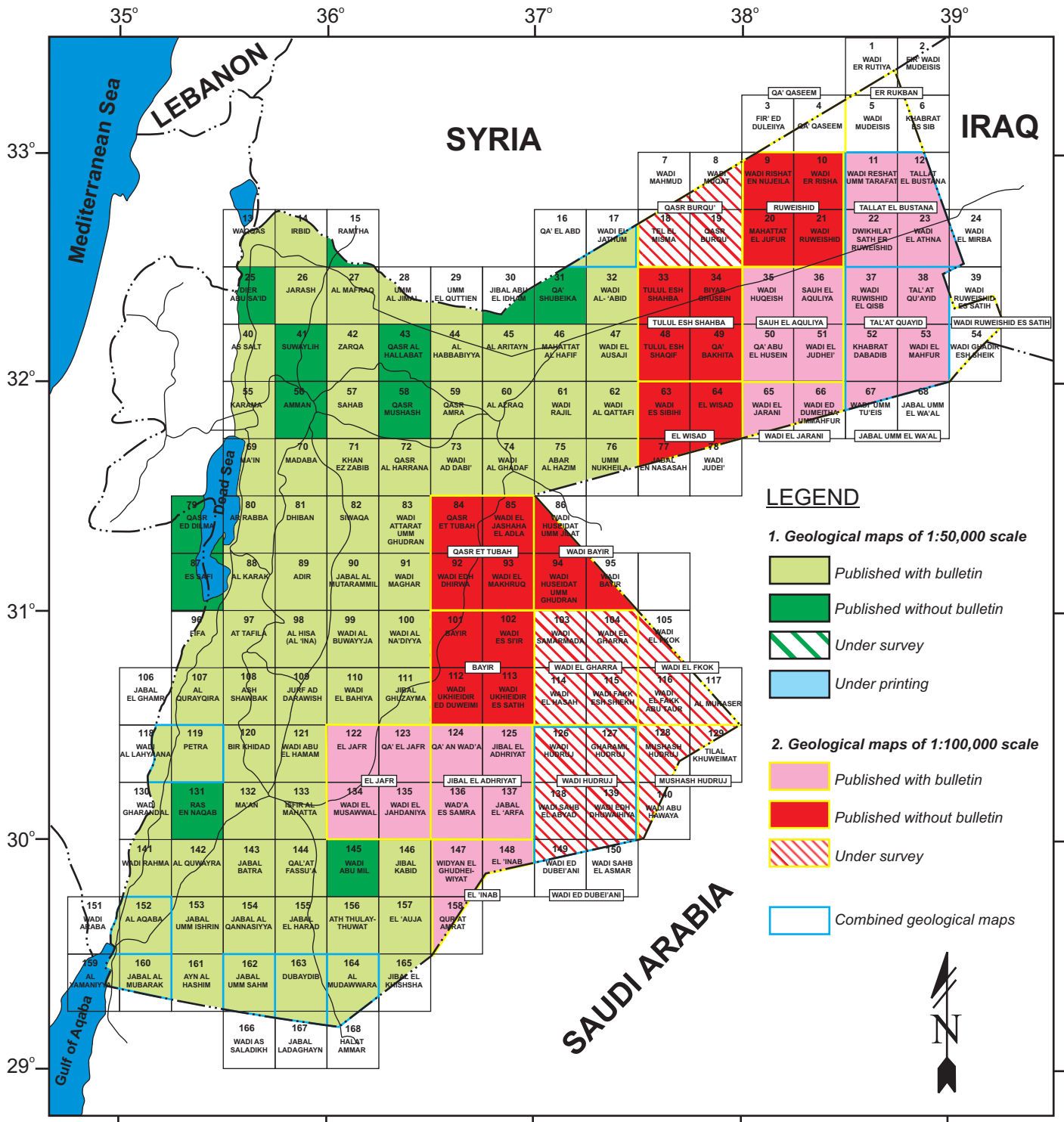




MINISTRY OF ENERGY AND MINERAL RESOURCES
GEOLOGY DIRECTORATE
GEOLOGICAL MAPPING DIVISION

**NATIONAL MAPPING PROJECT
(GEOLOGICAL MAPS INDEX)**

updated December, 2022



Geological Maps of the National Mapping Project (scale 1:50000)

(In order of publishing year)

No.	Map Name	Sheet No.	Year	Author (s)	Notes
1.	Jabal Al Mutarammil	3252-III	1985	M. El Hiyari	
2.	Wadi An Na'diyya	3251-I	1985	O. Abu Lihie	
3.	Kahan Az Zabib	3253-III	1985	D. Jaser	
4.	Siwaqa	3252-IV	1985	M. Barjous	
5.	Wadi Al Buayija	3251-IV	1985	B. Khalil	
6.	Jibal Ghuzayma	3251-II	1986	A. Kherfan	
7.	Jabal Umm Ishrin (Wadi Ram)	3049-II	1986	G. Abdulhamid	
8.	Ayn Al Hashim	3048-I	1986	H. Barakt	
9.	Al Aqaba	3049-III	1987	M. Rashdan	
	Wadi Araba	2949-II			
10.	Al Karak	3152-III	1987	J. Powell	
11.	Al Quwayra	3049-I	1987	I. Rabb'a	
12.	At Tafila	3151-IV	1987	B. Tarawneh	
13.	Al Mudawwara	3248-IV	1987	A. Masri	
	Halat Ammar	3248-III			
14.	Wadi Rahma	3049-IV	1987	K. Ibrahim	
15.	Jabal Al Mubarak	3048-IV	1987	F. Al Khatib	
	Al Yamaniyya	2948-I			
16.	Sahab	3253-IV	1988	E. Faddah	
17.	Adir	3152-II	1988	K. Shawabkeh	
18.	Ash Shawbak	3151-III	1988	M. Barjous	
19.	Fifa	3051-I	1988	B. Tarawneh	
20.	Ar Rabba	3152-IV	1988	B. Khalil	
21.	Wadi Gharandal	3050-II	1988	K. Ibrahim, M. Rashdan	
22.	Dubaydib	3148-I	1988	O. Abu Lihie	
	Jabal Ladghayn	3148-II			
23.	Ad Disa (J. Al Qannasiyya)	3149-III	1989	B. Khalil	
24.	Ath Thulaythuwat	3249-III	1991	A. Masri	
25.	Al Qurayqira (J. Hamra Faddan)	3051-II	1991	I. Rabba'a	
26.	Jarash	3154-I	1993	G. Abdulhamid	
27.	Madaba	3153-II	1993	N. Al Hunjul	
28.	Al Azraq	3553-I	1993	K. Ibrahim	
29.	As Salt	3154-III	1993	S. Muneizel B. Khalil	

30.	Suwaylih	3154-II	1993	A. Sawareih, M. Barjous	
31.	As Safawi (Al Hafif)	3051-I	1994	M. Al Nawasreh	
32.	Wadi Attarat Umm Ghudran	3252-I	1994	M. Abu Qudairah	
33.	Wadi Al Ghadaf	3353-II	1994	E. Faddah	
34.	Petra	3050-I	1995	M. Barjous	
	Wadi Al Lahyana	3050-IV			
35.	Al Hamidiyya (Al Habbabiyya)	3354-III	1996	K. Tarawneh	
36.	Ash Shidiyya (Fassu'a)	3149-I	1996	W. Halasa	
37.	Al Husayniyya Al Janubyya (Jurf Ad Darawish)	3151-II	1996	K. Moumani	
38.	Al Bishriyya (Al Aritayn)	3354-II	1996	K. Ibrahim	
39.	Ma'in	3153-III	1996	K. Shawabkeh	
40.	Dhiban (Wadi Al Mujib)	3152-I	1996	A. Masri	
41.	Al Hisa (Al 'Ina)	3151-I	1996	B. Tarawneh	
42.	Isfir Al Mahatta	3150-II	1997	W. Halasa	
43.	Wadi Ad Dab'i	3353-III	1997	E. Faddah	
44.	Al 'Umari (Abar Al Hazim)	3453-III	1997	I. Rabb'a	
45.	Irbid	3155-II	1997	B. Khalil	
46.	Qasr Amra	3353-IV	1997	M. Abu Qudairah	
47.	Al Maфраq	3254-IV	1997	A. Smadi	
48.	Wadi Rajil	3653-IV	1997	G. Abdulhamid	
49.	Deir Al Ka'hf (J. Abu El Idham)	3354-I	1997	M. Al Nawasreh	
50.	Bir Khidad	3150-IV	1998	A. Kherfan	
51.	Batn Al Ghul (J. Al Harad)	3149-II	1998	A. Masri	
52.	Wadi Maghar	3252-II	1998	H. Abu Hammour	
53.	Qasr Mushash	3253-I	1999	A. Smadi	
54.	Wadi Al 'Abid	3454-I	1999	K. Tarawneh	
55.	Qasr Al Harrana	3253-II	1999	N. Al Hunjul	
56.	Wadi Al Awsaji	3454-II	1999	E. Faddah	
57.	Wadi Al Qattafi	3453-I	1999	I. Rabb'a	
58.	Jabal Al Batra' (Jibal Thlaja)	3149-IV	2000	K. Moumani	
59.	Umm Al Quttein	3354-IV	2000	K. Tarawneh	
60.	Ash Shuna Ash Shamaliyya	3155-III	2000	B. Khalil	
61.	Al Karama	3153-IV	2001	K. Shawabkeh	
62.	Az Zarqa'	3254-III	2001	M. Abu Qudairah	
63.	Qa' Shbeika	3454-IV	2001	M. Al Nawasreh	
64.	Jabal Umm Sahm	3148-IV	2002	K. Moumani	
	Bir As Saladih	3148-III			

65.	Jibal Al Khushsha	3248-I	2002	A. Masri	
66.	Umm Nukhayla	3453-II	2002	I. Rabb'a	
67.	Ma'an	3150-III	2002	K. Tarawneh	
68.	Wadi Al Jathum	3455-I	2003	K. Tarawneh	
	Qa El Abed	3455-III			
69.	Umm Al Jimal	3254-I	2003	A. Gharaibeh	
70.	Wadi Al Bahiya	3251-III	2003	K. Moumani	
71.	Qasr Al Hallabat	3254-II	2004	A. Al Hiyari	
72.	Amman	3153-I	2004	A. Diabat, M. Abdelghafoor	
73.	Deir Abu Sa'id	3154-IV	2005	M. Abu Qudairah	
74.	Wadi Abu Mil	3249-IV	2006	K. Tarawneh	
75.	Al 'Awja	3249-II	2006	A. Masri	
76.	Wadi Abu Al Hamam	3150-I	2009	A. Gharaibeh	
77.	Jabal Kabid	3249-I	2010	K. Moumani	
78.	Ar Ramtha	3255-III	2013	A. Soboh	
79.	Ayn Jidi	3052 I	2018	L. Abu Affar	
	As Safi	3052 II			
80.	Ras En Naqab	3050 II	2022	M. Abweny, I. Rabba', K. Moumani, A. Masri, A. Gharaibeh, M. Abdelghafoor	

Note: Green highlighted cells refer to the maps with bulletins
Red highlighted cells refer to the maps without bulletins.

Geological Maps of the National Mapping Project (scale 1:100000)

(In order of publishing year)

No.	Map Name	Sheet No.	Year	Author (s)	Notes
1.	Al Wassad	3553	2000	I. Rabb'a	
2.	Tlul Esh Shahba	355-V	2005	I. Rabb'a, K. Ibrahim	
3.	Al Jafr	325	2005	K. Moumani	
4.	Wadi Al Jarrani	365-III	2005	A. Gharaibeh	
5.	Suh Al-'Uquliyya	365-V	2006	K. Khraisat	
6.	Jibal Al Adhriyyat	335	2007	K. Moumani	
7.	Tallat Al Bustana	375-V	2007	M. Abwini , A. Soboh	
	Wadi Al Mirba'	385-V			
8.	Tal'at Q;aiyid	375-IV	2008	M. Abdelghafoor	
	J. Umm Al Wi'al	375-III			
9.	Ar Ruweishid	365-IV	2008	M. Al Qadi	
10.	Qasr Tuba	355-II	2009	A. Al Hiyari	
11.	Bayir	355-I	2010	A. Gharaibeh	
12.	Wadi Bayir	345-II	2012	K. Khraisat	
13.	Al 'Inab	334-IX	2014	A. Masri	

Note: Green highlighted cells refer to the maps with bulletins
Red highlighted cells refer to the maps without bulletins.

Other Geological Maps Produced by the Geological Mapping Division

(In order of publishing year)

No.	Map Name	Scale	Year	Author (s)	Notes
1.	Petra	1: 5000	1991	M. Barjous, D. Jaser	
2.	Geological and Mineralogical Map of the Northeast Jordan Badia Area	1: 250000	2001	K. Ibrahim, I. Rabb'a, K. Tarawneh	

Note: Green highlighted cells refer to the maps with bulletins

Geological Bulletins of the National Mapping Project

No.	Bulletin Title	Author (s)	Year	Notes
1.	Geology of Jabal Al Mutarammil Area	M. El Hiyari	1985	
2.	Geology of Wadi An Na'diyya Area	O. Abu Lihie	1986	
3.	Geology of Kahan Az Zabib Area	D. Jaser	1986	
4.	Geology of Siwaqa Area	M. Barjous	1986	
5.	Geology of Wadi Al Buayija Area	B. Khalil	1987	
6.	Geology of Jibal Ghuzayma Area	A. Kherfan	1987	
7.	Geology of Area Al Aqaba and Wadi Araba reas	M. Rashdan	1988	
8.	Geology of Al Karak Area	J. Powell	1988	
9.	Petrography of the Plutonic Rocks of the Aqaba Complex, Jordan	I. Rabb'a, K. Ibrahim	1988	
10.	The Geology, Geochemistry and Tectonic Setting of the Granitic and Associated Rocks in the Aqaba and Araba Complexes of southwest Jordan	W. McCourt and others	1990	
11. A	Stratigraphy and Sedimentation of the Phanerozoic Rocks in Central and South Jordan, Part A Ram and Khreim Groups	J. Powell and others	1989	
11. B	Stratigraphy and Sedimentation of the Phanerozoic Rocks in Central and South Jordan, Part B Kurnub, Ajlun and Belqa Groups	J. Powell and others	1989	
12.	Geology of At Tafila Area	B. Tarawneh	1988	
13.	Geology of Al Mudawwara & Halat Ammar areas	A. Masri	1988	
14.	Geology of Jabal Umm Ishrin (Wadi Ram) Area	G. Abdulhamid	1990	
15.	Geology of Wadi Rahma Area	K. Ibrahim	1991	
16.	Geology of Al Quwayra Area	I. Rabb'a	1991	
17.	Geology of Sahab Area	E. Faddah	1991	
18.	Geology of Adir Area	K. Shawabkeh	1991	
19.	Geology of Ash Shawbak Area	M. Barjous	1992	
20.	Geology of Fifa Area	B. Tarawneh	1992	
21.	Lithostratigraphy of the Jurassic outcrops of North Jordan	B. Khalil	1992	
22.	Geology of Ar Rabba Area	B. Khalil	1992	
23.	Geology of Ath Thulaythuwat Area	A. Masri	1992	
24.	Geology of Wadi Gharandal Area	K. Ibrahim	1993	
25.	The Geological Framework for the Harrat Ash-Sham Basaltic Super-Group and Its Volcanotectonic Evolution	K. Ibrahim	1993	
26.	Geology of Ad Disa (J. Al Qannasiyya) Area	B. Khalil	1994	
27.	Geology of Ayn Al Hashim, Jabal Al Mubarak and Al Yamaniyya Areas	G. Abdulhamid, K. Ibrahim, C. Mortimer	1994	
28.	Geology of Al Qurayqira (J. Hamra Faddan) Area	I. Rabb'a	1994	
29.	Geology of As Safawi (Al Hafif) Area	M. Al Nawasreh	1994	
30.	Geology of Jarash Area	G. Abdulhamid	1995	
31.	Geology of Madaba Area	N. Al Hunjul	1995	
32.	Atlas of the Granitic and Associated Rocks of the Basement Complexes of Southwest Joedan	I. Rabb'a, K. Tarawneh, W. Jassar, K. Moumani	1996	

33.	Geology of Wadi Attarat Umm Ghudran Area	M. Abu Qudairah	1996	
34.	Geology of Wadi Al Ghadaf Area	E. Faddah	1996	
35.	Geology of Al Hamidiyya (Al Habbabiyya) Area	K. Tarawneh	1996	
36.	Regional Geology of Al Azraq Area	K. Ibrahim	1996	
37.	Geology of Ash Shidiyya (Fassu'a) and Isfir Al Mahatta Areas	W. Halasa	1997	
38.	Geology of Al Husayniyya Al Janubyya (Jurf Ad Darawish) Area	K. Moumani	1997	
39.	Geology of Al Bishriyya (Al Aritayn) Area	K. Ibrahim	1997	
40.	Geology of Ma'in Area	K. Shawabkeh	1998	
41.	Geology of As Salt Area	B. Khalil and S. Muneizel	1998	
42.	Geology of Wadi Ad Dab'i Area	E. Faddah	1998	
43.	Geology of Al 'Umari (Abar Al Hazim) Area	I. Rabb'a	1998	
44.	Geology of Wadi Al 'Abid Area	K. Tarawneh	1999	
45.	Geology of Wadi Rajil Area	G. Abdulhamid	1999	
46.	Geology of Irbid and Ash Shuna Ash Shamaliyya (Waqqas) Area	B. Khalil	2000	
47.	Geology of Qasr Amra Area	M. Abu Qudairah	2000	
48.	Geology of Al Mafrq Area	A. Smadi	2000	
49.	Geology of Qasr Al Harrana Area	N. Al Hunjul	2001	
50.	Geology of Wadi Al Awsaji Area	E. Faddah	2001	
51.	Geology of Bir Khidad Area	A. Kherfan	2002	
52.	Geology of Jabal Al Batra' (Jibal Thlaja) Area	K. Moumani	2002	
53.	Geology of Umm Al Quttein Area	K. Tarawneh	2002	
54.	Geology of Dhiban (Wadi Al Mujib) Area	A. Masri	2003	
55.	Geology of Jabal Umm Sahm and Bir As Saladih Areas	K. Moumani	2003	
56.	Geology of Petra and Wadi Al Lahyana Areas	M. Barjous	2003	
57.	Geology of Al Karama Area	K. Shawabkeh	2004	
58.	Geology of Az Zarqa'Area	M. Abu Qudairah	2004	
59.	Geology of Ma'an Area	K. Tarawneh	2004	
60.	Geology of Wadi Al Bahiya Area	K. Moumani	2005	
61.	Geology of Umm Al Jimal Area	A. Gharaibeh	2005	
62.	Geology of Umm Nukhayla and Wadi Al Qattafi Areas	I. Rabb'a	2005	
63.	Geology of Wadi Al Jathum and Qa El Abed Areas	K. Tarawneh	2006	
64.	Geology of Al Jafr Area	K. Moumani	2006	
65.	Geology of Dubaydib and Jabal Ladghayn Area	A. Masri	2007	
66.	Geology of Al Hisa (Al 'Ina)Area	B. Tarawneh	2007	
67.	Geology of Jibal Al Adhriyyat Area	K. Moumani	2008	
68.	Surface and Subsurface Lithostratigraphic Relationships of the Tertiary Wadi Shallala Chalk Limestone Formation In Jordan	M. Al Bashish and Hassan Abu Azzam	2008	
69.	Geology of Wadi Al Jarrani Area	A. Gharaibeh	2009	
70.	Geology of Tallat Al Bustana and Wadi Al Mirba'Area	M. Abwini	2009	
71.	Geology of Suh Al-'Uquliyya Area	K. Khraisat	2010	
72.	Geology of Batn Al Ghul (J. Al Harad) Area	A. Masri	2010	

73.	Geology of Tal'at Q;aiyid and Jabal Umm Al Wi'al Area	M. Abdelghafoor	2011	
74.	Surface and Subsurface Lithostratigraphic Relationships of the Tertiary Umm Rijam Chert Limestone Formation In Jordan	M. Al Bashish and Hassan Abu Azzam	2011	
75.	Geology of Jibal Al Khushsha Area	A. Masri	2012	
76.	Geology of Jabal Kabid Area	K. Moumani	2013	
77.	Geology of Al 'Awja Area	A. Masri	2015	
78.	Geology of Wadi Maghar Area	K. Moumani	2016	
79.	Geology of Al 'Inab Area	A. Masri	2017	
80.	Geology of Wadi Abu Al Hamam Area	A. Gharaibeh	2019	

Note: Green highlighted cells refer to the bulletins with maps
Red highlighted cells refer to the bulletins without maps.

Other Geological Bulletins Produced by the Geological Mapping Division

No.	Bulletin Title	Author (s)	Year	Notes
1.	Geotechnical Studies and Geological Mapping of Ancient Petra City	D. Jaser and M. Barjous	1991	
2.	Geological and Mineralogical Map of the Northeast Jordan Badia Area	K. Ibrahim, I. Rabb'a, K. Tarawneh	2001	
3.	Lithostratigraphic Correlation of Phanerozoic Rocks in Southern Jordan and Northwest Saudi Arabia	A. Masri, A. Memesh, K. Moumani, S. Dini	2014	

Note: Green highlighted cells refer to the bulletins with maps
Red highlighted cells refer to the bulletins without maps.